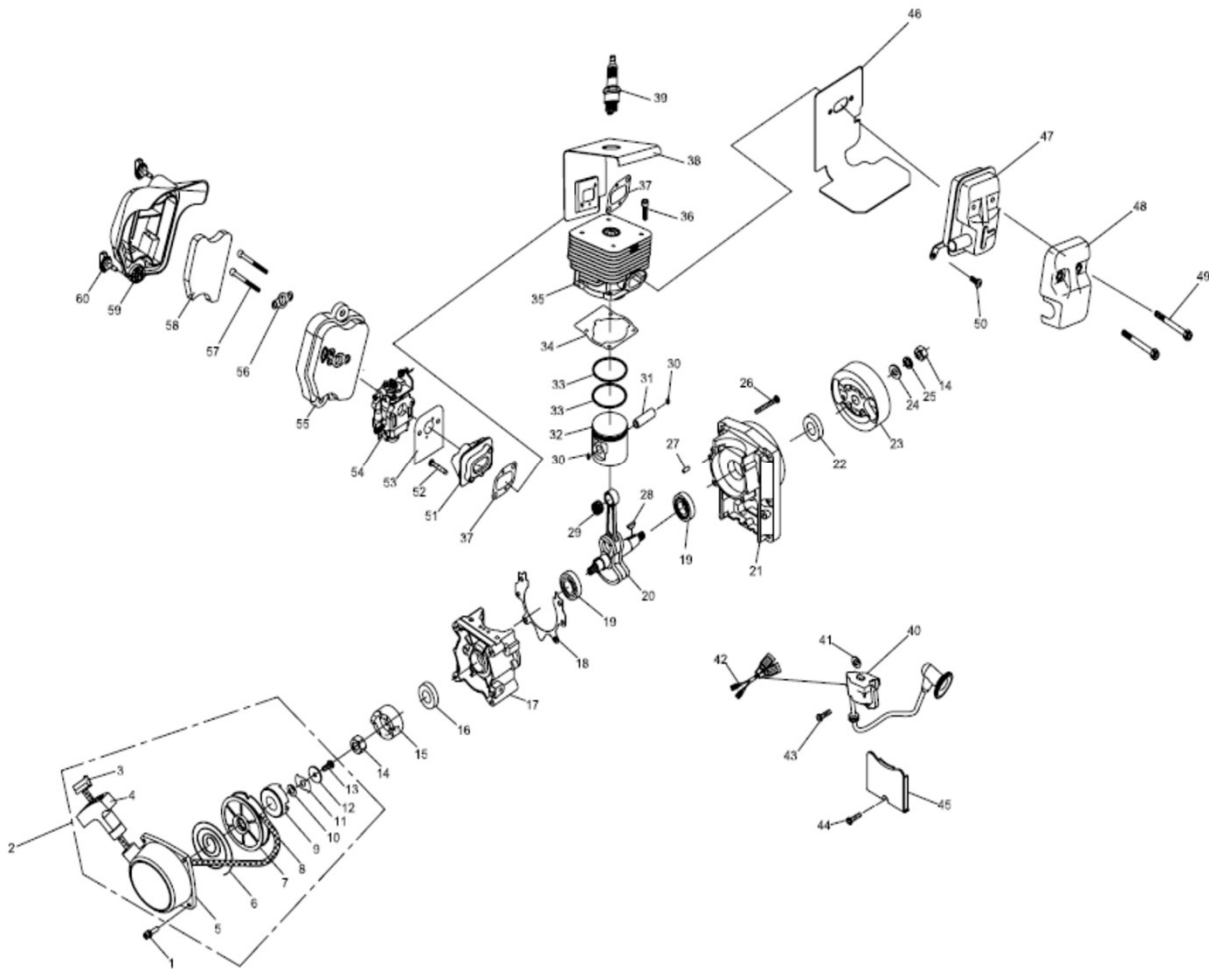


Fig. 1 ENGINE GROUP

EB-500-E



NO.	Part NO.	Part Name	Qty.
Engine Group			
1	GB70.1+GB93+GB97	Screw M5×16	4
2	1E40FP-3Z.4	Starter Assembly	1
3	1E40FP-3Z.4-10	Handle Cap	1
4	1E40FP-3Z.4-2	Starter Handle	1
5	1E40FP-3Z.4-1	Starter Cover	1
6	1E40FP-3Z.4-7	Spring	1
7	1E40FP-3Z.4-6	Reel	1
8	1E40FP-3Z.4-9	Rope	1
9	1E40FP-3Z.4-8	Wheel	1
10	GB860	Washer 8	1
11	1E40FP-3Z.4-5	Guide Slice	1
12	1E40FP-3Z.4-4	Washer	1
13	GB67	Screw M5×12	1
14	GB/T6170	Nut M8	2
15	3WF-960.1-2	Start Reel	1
16	1E36F.2	Seal	1
17	1E40F-E.6-2	Back Cankcase	1
18	1E40F-5.8-4	Gasket	1
19	GB/T276	Bearing 6202/P6	2
20	EB-500-E.1.2.1	Crank Shaft	1
21	EB-500-E.1.3-1	Front Half Crankcase	1
22	1E40F-5.9	Oil Seal	1
23	1E46FP.1.1-	Fly Wheel	1
24	GB96	Washer 8	1
25	GB93	Washer 8	1
26	GB70	Screw M5×30	4
27	GB119	Pin 4h8×10	2
28	GB1099	Key 3×5×13	1
29	1E44F-2A.2-3	Bearing	1
30	P40.6-4	Snap Ring	2
31	1E44F-2A.2-2	Piston Pin	1
32	1E44F-E.3-1	Piston	1
33	1E44F-2A.2-4	Piston Ring	2
34	1E40F-5-6	Gasket	1

35	EB-500-E.1-2	Cylinder	1
36	GB70	Screw M5×20	4
37	1E40F-5-2	Gasket	2
38	EB-500-E.1-1	Mantle	1
39	RCJ6Y	Spark Plug	1
40	1E46FP.1.1-	Magneto	1
41	P40-5	Washer	2
42	EB-500-E.1-6	Stop Wire	1
43	GB/T9074.13	Screw M4×20	2
44	GB70+GB93+GB97	Screw M5×20	1
45	1E46FP-2	Shield	1
46	EB-500-E.1-4	Gasket	1
47	EB-500-E.1.1	Muffler	1
48	EB-500-E.1-3	Muffler Cover	1
49	GB70.1+GB97	Screw M6×60-12.9	2
50	GB70.1+GB93+GB97	Screw M5×12	1
51	1E44F-E-PBJ.7	Heat Dam	1
52	GB70.1	Screw M5×25	2
53	EB-500-E.1-5	Gasket	1
54	1E48FP-E.4	Carburetor	1
55	EB-500-E.1.6.1	Filter Box Inside Cover	1
56	P40.1-3	Stator	1
57	GB70.1+GB93+GB97	Screw M5×55	2
58	EB-500-E.1.6-3	Filter	1
59	EB-500-E.1.6-1	Filter Box Outside Cover	1
60	1E34F.1.2	Knob Bolt M4	2