

Limited Warranty

Maxim Manufacturing Corporation, through its dealers will repair or replace any part, or parts of the Edger frame or handles that are defective in material or workmanship or both. **Transportation charges on parts submitted for repair or replacement under this Warranty must be borne by purchaser.** The original sales receipt must be submitted as proof of purchase date. The sales receipt will be returned. Maxim Manufacturing Corporation assumes no liability for labor charges made in performance of this warranty.

The Warranty periods are as follows:

- A. Frame for 1 Year
- B. Handles for 1 Year

The Throttle Cable, Tires, Fasteners, star blade, and belt are not warranted because during normal service they are subject to wear.

The Warranty on the Frame is Void if:

- A. Frame is broken or bent due to abuse.
- B. Wheels are bent or broken due to impact.
- C. Altering of engine or its components has occurred.

All warranties are voided if the Edger has been altered, rented, used under abnormal conditions, or subject to abuse, misuse, neglect, or improper maintenance.

The Engine is warranted by the engine manufacturer, not by Maxim Manufacturing Corporation. See Engine Owner's Manual for information regarding engine warranty.

Should you experience problems with your Edger take it back to your authorized Maxim dealer or distributor to make warranty claims.

Maxim Manufacturing is not liable for any damage claim or liability claim, personal or otherwise, resulting from the operation of this vehicle in any way.

Maxim Edger - RME4HWT



⚠ WARNING: READ ENTIRE MANUAL BEFORE ATTEMPTING TO OPERATE MACHINE!

If incorrectly used this machine can cause severe injury. Those who use and maintain this machine should be trained in its proper use, warned of its dangers, and should read the entire manual before attempting to set up, operate, adjust, or service this machine.



The Engine Exhaust from this product contains chemicals known to the State of California to cause cancer, birth defects or other reproductive harm.

IMPORTANT: THIS UNIT IS EQUIPPED WITH AN INTERNAL COMBUSTION ENGINE AND SHOULD NOT BE USED ON OR NEAR ANY UNIMPROVED FOREST-COVERED, BRUSH-COVERED, OR GRASS-COVERED LAND UNLESS THE ENGINE'S EXHAUST SYSTEM IS EQUIPPED WITH A SPARK ARRESTER MEETING APPLICABLE LOCAL LAWS (IF ANY). IF A SPARK ARRESTER IS USED, IT SHOULD BE MAINTAINED IN EFFECTIVE WORKING ORDER BY THE OPERATOR.

IN THE STATE OF CALIFORNIA, A SPARK ARRESTER IS REQUIRED BY LAW (SECTION 4442 OF THE CALIFORNIA PUBLIC RESOURCES CODE). OTHER STATES MAY HAVE SIMILAR LAWS. FEDERAL LAWS APPLY ON FEDERAL LANDS. SEE YOUR AUTHORIZED SERVICE CENTER FOR A SPARK ARRESTER.

Important Rules for Your Safety



Before operating this machine read all the instructions for safe operation, as well as, the instructions governing the engine and other components of this machine.

TRAINING

- **Read the Owner's Manual carefully.** Be thoroughly familiar with the controls and the proper use of the equipment. Know how to stop the unit and disengage the controls quickly.
- Never allow children to operate the equipment. Never allow adults to operate the equipment without proper instruction.
- Operators should be mature enough to understand the dangers of the equipment.

PREPARATION

- Thoroughly inspect the area where the edger is to be used and remove all foreign objects.
- Keep the area of operation clear of all persons, particularly small children and pets.
- Do not operate the equipment without wearing adequate outer garments.
- Wear footwear that will improve footing and provide adequate protection.
- Loose clothing may be caught by moving parts on the machine or by the surrounding environment and cause serious injury.
- Wear safety goggles to protect eyes from any debris or objects that may be thrown from the edger.
- Wear long pants, sturdy shoes and gloves to protect yourself from debris, sticks, rocks or other objects which could be thrown from edger.
- Handle fuel with care. It is highly flammable.
- Use only an approved fuel container.
- **Never add fuel to a running engine or a hot engine.**
- Fill fuel tank outdoors with extreme care. Never fill fuel tank indoors.
- Replace gasoline cap securely and clean up spilled fuel before starting.
- Never attempt to make any adjustments while the engine is running (except where specifically recommended by manufacturer).
- Do not operate edger until you are familiar with all controls and safety symbols.

OPERATION

- Check that blade is disengaged before starting engine.
- Stay clear of the front of the machine during and after starting. Once machine is started, stand behind it with hands on handles at all times.
- Unless there is very good artificial light, operate edger only in daylight hours.
- Allow engine sufficient warm-up period.
- Give complete, undivided attention to the job at hand.
- **Thoroughly inspect the area where the edger is to be used and remove all the large stones, boards, wires, and other foreign objects.**

ASSUMPTION OF RISK: THE OWNER AND/OR OPERATOR OF THIS TRIMMER ASSUMES ALL THE RISKS INCIDENT TO AND ARISING OUT OF THE OPERATION OF THIS MACHINE. BEFORE OPERATING THE TRIMMER, READ ALL THE INSTRUCTIONS GOVERNING THE ENGINE AND THE TRIMMER.

- Do not operate power tools in wet soil, which clogs the cutter and increases your danger of falling.
- Do not operate machine when barefoot or wearing open sandals. Wear strong work-type footwear which will improve footing and provide optimum protection. Provide leg protection by means of long, heavy denim trousers and brogues.
- Stay alert for hidden hazards or traffic.
- Never operate the edger indoors where exhaust from engine can collect. It contains carbon monoxide which is a tasteless, odorless, poisonous gas.
- Operator should never place hands, feet, or any part of his body or clothing near any moving part of this edger.
- Never operate the edger without proper guards, plates, or other safety protective devices in place.
- Take all possible precautions when leaving the machine unattended. Stop the engine.
- Stop the engine when leaving the operating position.
- If the edger should start to vibrate abnormally, stop the engine and check immediately for the cause. Vibration is generally a warning of trouble.
- After striking a foreign object, stop the engine, remove the spark plug wire, and thoroughly inspect the edger for any damage. If damage has occurred repair the damage before restarting and operating the edger.
- Do not put hands or feet near or under rotating parts.
- Never operate the machine at high speeds on slippery surfaces. Look behind and use care when backing up.
- Do not run while using equipment.
- Equipment should only be used as it was intended. Misuse can cause serious injury.
- Never operate equipment when under the influence of drugs, alcohol, or prescription drugs which could cause drowsiness or poor judgement.

MAINTENANCE

- Keep machine in good working condition.
- Before cleaning, repairing, or inspecting the machine, shut off the engine and make certain all moving parts have stopped. Disconnect spark plug.
- Follow the recommendations for maintenance described in this manual and the engine literature.
- **Keep engine and edger free from accumulations of grass, leaves, or excessive grease. An accumulation of these combustible materials may result in fire.**
- Store gasoline only in an approved container.
- Never store machine with fuel in the fuel tank inside a building where open flame or spark are present. Allow engine to cool before storing in any enclosure.
- Frequently check all bolts and other connectors for proper tightness before operating the equipment.
- Replace safety decals as needed.

Reference	Part Number	Description
1	132139	Honda 4 hp Engine
2	359652	Belt Keeper for Engine
3	271686	Pully 2 - 3/4" c/shaft
4	358143	Motor Shaft Extension
5	359645	Handle Panel, Lower
6	359736	RH Rail Chassis Honda Motor
	359739	RH Rail Chasis Briggs Motor
7	359732	Rear Motor Support
8	359731	Front Motor Support
9	359738	LH Rail Chassis Briggs and Honda
10	359633	Front Axle
11	359737	Control Rod
12	313786	Handle Grip
13	359637	Index Plate Blade Control
14	359626	Lift Lever
15	359646	Handle Bar
16	162056	Throttle Control
17	359635	Bracket Panel Support
18	359636	Handle Plate Upper
19	359651	Belt Cover
20	461460	Roll Pin 5/16" x 2 1/2"
21	359622	Flap Deflector
22	359616	Compression Spring
23	359644	Spindle Support
24	359647	Belt Keeper for Spindle
25	400295	Capscrew 5/8" x 5 1/2" NF
26	359730	Spindle Pulley Assembly
28	359627	Washer 1.2 x .63 x .12
29	359629	Bearing 5/8"
30	359628	Spacer Bearing, Shaft
31	359741	Bushing, 1/2"
32	359653	Blade Guard
33	359648	Blade
34	455051	5/8" Flatwasher, SAE
35	443814	5/8" NF Hex Nut
36	130726	Wheel, 8" x 1.75"
37	461463	Ball Joint, 3/8"
38	272240	V Belt, L432
40	359892	Belt Guard
41	359894	Spacer - B/Grd
42	359893	Spacer - B/Grd
43	443106	5/16" Hex Nut NC
44	400190	5/16" x 1 1/4" NC

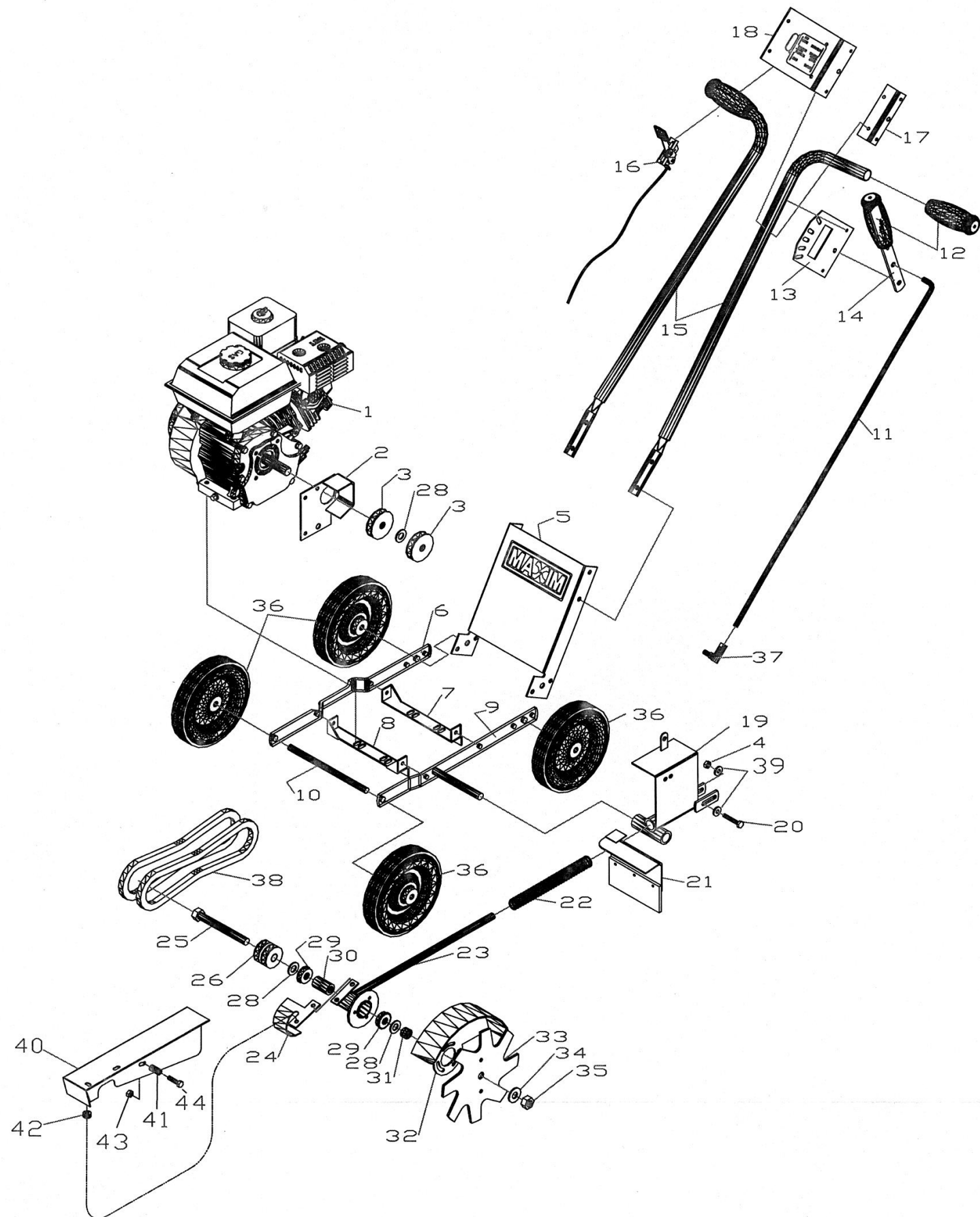


Figure 8

Assembly

1. Remove the Edger from the carton by cutting the box on all four corners and rolling it off the box base.
2. Remove owner's manuals and parts bag.
3. Attach both handle bars to the rear of the chassis using four bolts, lockwashers, and nuts.
 - Handle bar with decal goes on the right hand side
 - Do not tighten nuts until handle panel has been assembled
4. Attach the handle panel to the front side of the handle bars using four bolts, lockwashers, and nuts. Tighten handle panel nuts, then tighten nuts that secure handle bars to the chassis.
5. Assemble the blade engagement rod.
 - Affix the .375-24 nut to the threaded end of the blade control rod and run it up to the end of the threads.
 - Attach the rod into the end of the side of the belt cover beside the engine. Screw the rod into the rod end approximately one half inch.
 - With the blade control lever in the "DISENGAGED" position, slide the upper end of the control rod through the hole and secure with a cotter pin.
 - Assure that the blade engage lever works properly, and that the bolt is slack when the lever is in the "DISENGAGED" position.
6. Rotate the debris guard down to the operating position.
7. Fill the engine crankcase with oil according to the engine owner's manual.
8. Fill the gasoline tank using clean, fresh, lead-free gasoline. Do not overfill the tank. Leave approximately one quarter of an inch of tank space for expansion. See engine owners manual.

Operation

Before Starting Your Maxim Edger . . .

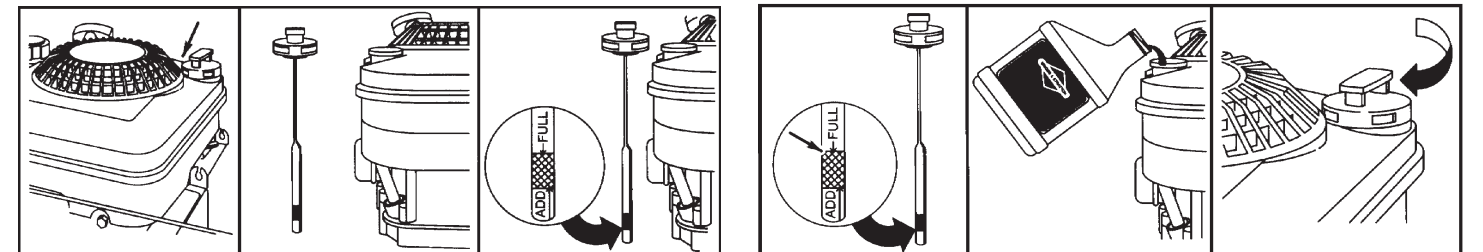
1. **Check your Edger.** Be sure all bolts are tight. After several hours of operating and at periodic maintenance intervals, check all fasteners and tighten securely as required.
2. **Check oil and fill according to the engine owner's manual** (See Figure 1).



WARNING : YOUR ENGINE IS SHIPPED WITHOUT OIL. YOU MUST FILL THE ENGINE WITH OIL BEFORE ATTEMPTING TO CRANK YOUR ENGINE.

- Read Engine manual for full instructions and safety warnings.
- Place edger on level ground.
- Clean around oil fill area.
- Remove dipstick. Wipe with clean cloth.
- Reinsert dipstick and tighten. Remove dipstick and check.
- Oil should be at FULL level.
- If oil is required, add slowly. Recheck level.
- Tighten dipstick and clean around oil fill area before starting.

Figure 1



WARNING: GASOLINE IS FLAMMABLE. USE CAUTION WHEN HANDLING OR STORING GASOLINE. NEVER FILL THE GAS TANK WHILE THE ENGINE IS RUNNING OR HOT. ALLOW THE ENGINE TO COOL BEFORE ADDING GAS. CLEAN ANY SPILLED GASOLINE.

3. Fill engine with clean unleaded gasoline according to the engine owner's manual
4. Remove all debris from guard, muffler area, head cooling fins, and throttle controls.
5. Check the air cleaner element. Insure that the air filter is clean.
6. Familiarize yourself with all operating controls.



DO NOT ATTEMPT TO START OR OPERATE THIS EDGER UNTIL YOU ARE COMPLETELY FAMILIAR WITH LOCATION AND USE OF EACH CONTROL NECESSARY TO OPERATE THIS EDGER. YOU MUST KNOW HOW TO STOP THIS MACHINE BEFORE YOU START IT. EACH TIME PRIOR TO STARTING, CHECK THE THROTTLE ASSEMBLY TO INSURE IT IS WORKING PROPERLY.

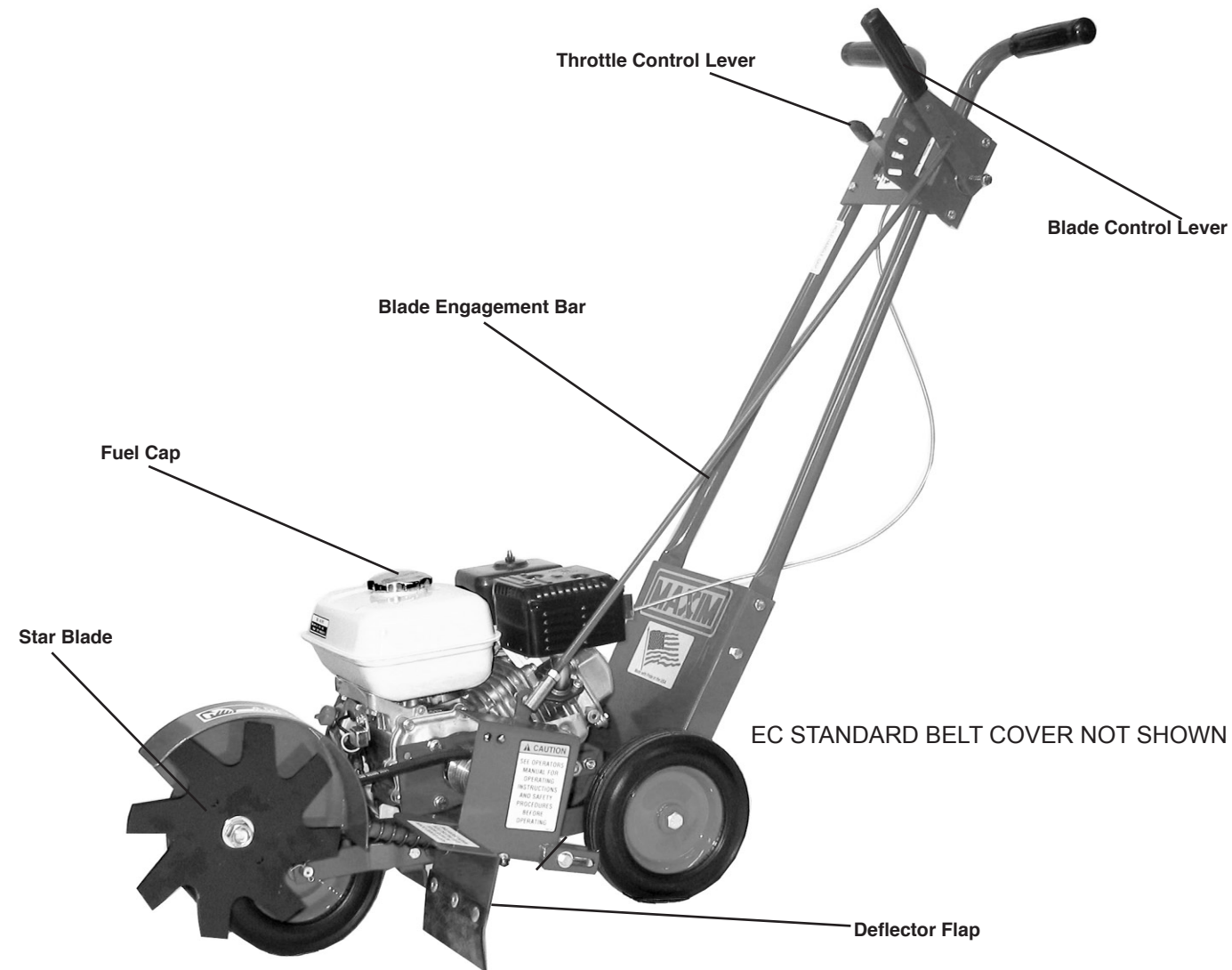


Figure 3

Operating Controls

- Blade Control Lever** -- Controls the rotation of the edger blade and the depth of the edger blade. To begin edging push the control lever down. To stop edging return the control lever to the disengage position.
- Throttle Control Lever** -- Controls the speed of the engine or stops the engine. To stop the engine move the throttle back towards the operator to the stop or off position. The faster the engine runs, the faster the edger blade will rotate.
- Deflector Flap** -- The deflector flap is a safety device that will help prevent debris from hitting the operator's face and body. Never operate this edger without the deflector flap or if the deflector flap is broken.



NEVER OPERATE THE EDGER WITHOUT PROPER GUARDS, SHIELDS OR OTHER SAFETY DEVICES IN PLACE. SERIOUS INJURY OR DEATH COULD RESULT.



EVEN THOUGH THIS EDGER IS EQUIPPED WITH SAFETY SHIELDS, IT IS POSSIBLE FOR DEBRIS TO BE THROWN FROM THE EDGER. WEAR SAFETY GLASSES AT ALL TIMES AND KEEP THE EDGER AREA CLEAR OF BYSTANDERS ESPECIALLY SMALL CHILDREN AND PETS.

Starting the engine

- Read engine owner's manual for complete starting instruction. Do not operate this edger without reading the engine owner's manual.
- Move the throttle control lever forward to the START or FAST position.
- Grasp rope handle and pull slowly until resistance is felt. Then pull cord rapidly to overcome compression, prevent kickback and start engine.
- Operate engine in the fast throttle position.

Adjustments and Maintenance

Star Blade

- The Maxim Trencher Edger ships with two star blades and a spacer. For straight blade edging, only one blade is needed. Remove one blade and a spacer for greater efficiency.
- For shallow trenching for invisible dog fencing, or low voltage wire, use two star blades with the spacer.
- To change blades, use two wrenches to loosen 5/8" hex nut. Paying close attention to the blade tip placement, remove worn star blade. Replace blade making sure the blade tips rotate forward.
- Edging depth is set with the blade control lever. When edging an area for the first time, it may be desirable to set the depth lower to establish a trench for the blade for future edgings.
- Always return the blade control lever to the DISENGAGE position before stopping the unit.

Care and Storage

- Remove spark plug wire before performing any maintenance or cleaning of the unit.
- Always keep excess dirt, oil, and trash cleaned from the unit.
- Check the engine oil each time the gas tank is filled. See the engine operating instructions provided for further engine care and maintenance.
- If the unit is to be stored, remove all gas from the tank. Run the engine until it stops from lack of fuel. Any fuel that remains in the tank should be absorbed with a clean, dry cloth.
- Place a few drops of oil on the axle at each wheel and spin the wheel to distribute.
- Place the blade control lever in the lowest position. Put a few drops of oil on the spindle support shaft (Ref 23,). Return the blade control lever to the DISENGAGE position.