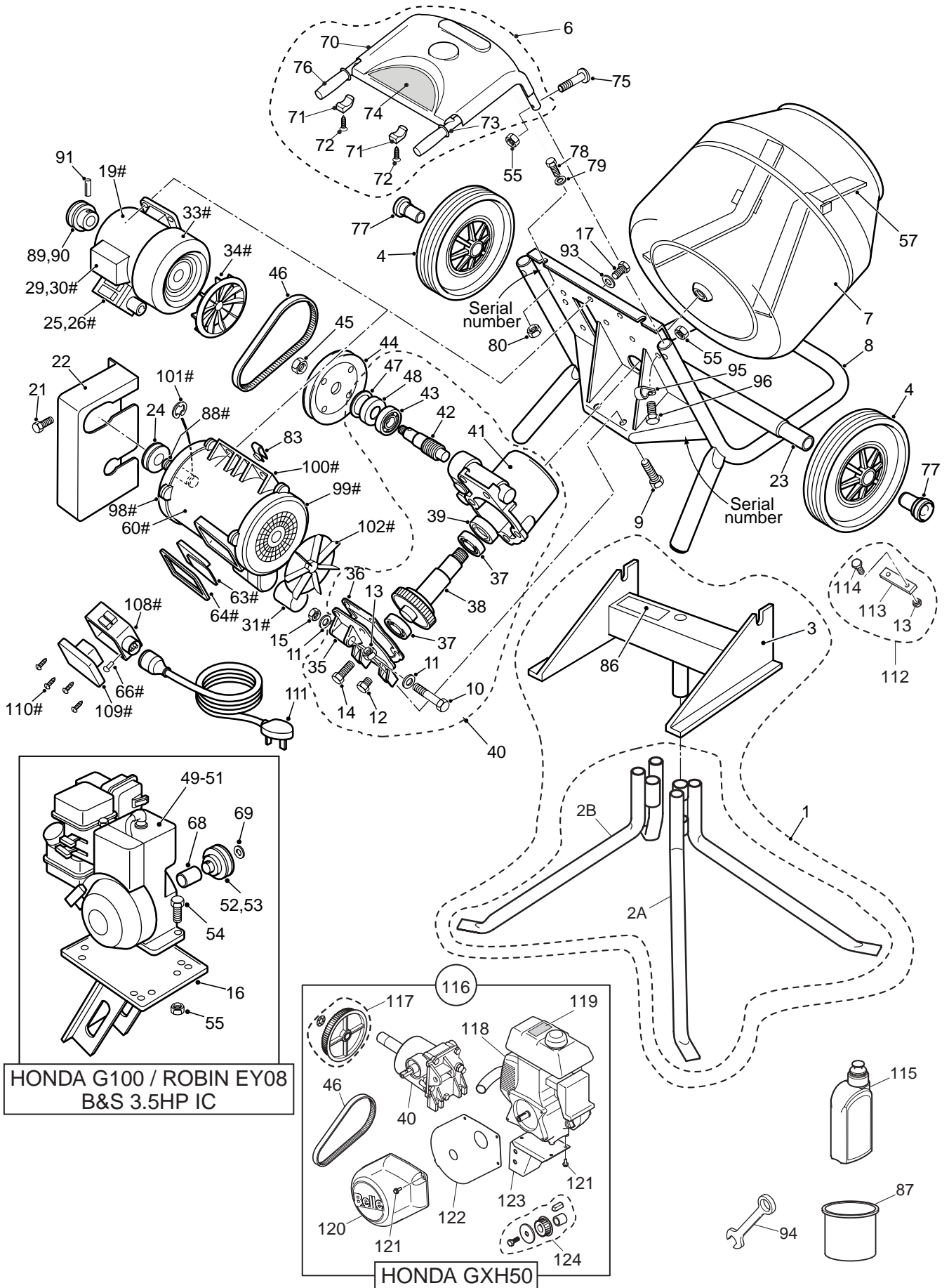


854/10001/2 1/03 Minimix 140 / 150



HONDA G100 / ROBIN EY08
B&S 3.5HP IC

HONDA GXH50

ITEM NUMBER ⁽¹⁾	PART NUMBER ⁽²⁾	DESCRIPTION ⁽³⁾	ITEM NUMBER ⁽¹⁾	PART NUMBER ⁽²⁾	DESCRIPTION ⁽³⁾
1	900-14300	STAND ASSEMBLY	63	900-19200	ADAPTOR PLATE MOTOR
2	900-14200	STAND BOTTOM LH & RH COMBINED	64	900-19600	GASKET
2A	900-17000	STAND BOTTOM LH WA (2 BOSSES)	66	900-19100	RIVET
2B	900-17100	STAND BOTTOM RH WA (1 BOSS)	68	MS20	SPACER (HONDA G100)
2C	900-11600	STAND TOP WA	69	4-0008	WASHER (5/8")
4	60-0286	WHEEL	70	900-99914	TOP COVER
6	900-25100	HANDLE ASSEMBLY	71	900-99918	TOP COVER CLAMP
7	CMS12	DRUM	72	7-5017	SCREW PLASFAST
8	900/11500	MAINFRAME WA (MINIMIX 150 BOXED)	73	900-25000	HANDLE WA
8A	MS05	MAINFRAME WA (MINIMIX 140)	74	800-21300	DECAL TOP COVER
9	7-10003	SET SCREW (M10 X 35)	75	9/8021	SCREW (M8 SPECIAL)
10	9-12005	BOLT (M12 X 70)	76	XS35	HANDLE GRIP
11	4-1205	WASHER (M12)	77	900-11400	RETAINER WHEEL
12	MS12	FILLER BUNG	78	7-6001	SET SCREW (M6 X 12)
13	8-10003	NUT (M10)	79	4-6003	WASHER (M6)
14	7-8003	SET SCREW (M8 X 25 SQ FLOW)	80	8-6001	NUT (M6)
15	8-12002	NUT (M12)	83	8/8007	NUT (M8 LUG)
16	900-23400	MOTOR DECK	86	900-12600	DECAL STAND ASSEMBLY
17	7-8011	SET SCREW (M8 X 20)	87	1-0519	PAINT - 1 LITRE TIN (ORANGE)
19	CMS02	MOTOR C/W PULLEY (110V-50HZ)	87A	1-0507	PAINT - SPRAY CAN (ORANGE)
19A	CMS65	MOTOR (110V-60HZ)	88	900-15000	SLEEVE MOTOR SHAFT
21	7-10002	SCREW (10 X 3/8")	89	MS17	MOTOR PULLEY (5/8")
22	MS14	BELT GUARD	90	CMS64	PULLEY (5/8") (60HZ)
23	900-11503	AXLE TUBE	91	7-6008	GRUB SCREW (M6 X 8)
24	900-12400	PULLEY M30 MOTOR	93	4-8008	WASHER (5/16" X 1")
25	CMS63	BOX SWITCH 110V NVR C/W BS4343	94	900-20500	SPANNER (M8)
26	CMS36	ACC PLATE 110V	95	900-10100	P-CLIP
29	CMS17	COVER - 110V/240V CAPACITOR	95A	900-10200	P-CLIP (NO. 6)
30	CMS29	CAPACITOR (110V - SILVER)	96	7-8008	SCREW SET (M8 X 16)
31	CMS21	CAPACITOR (240V - WHITE)	98	900-16700	COVER MOTOR PULLEY END
33	CMS25	FAN COWL (110V/240V)	99	900-16800	COVER MOTOR FAN END
34	CMS24	FAN (110V/240V)	100	900-16400	CASING M30 MOTOR
35	MS10	GEARBOX END PLATE (→ 89)	101	600-03150	E-CLIP
36	MS11	GASKET (→ 89)	102	900-16500	FAN M30 MOTOR
37	CMS10	BEARING (6006)	108	900-19500	BOX BASE CEE7 (220V)
38	MS09	DRUMSHAFT	108A	900-19400	BOX BASE CEE17 (240V)
38A	MS33	KIT WORM & DRUMSHAFT	109	900-19300	LID ASSY NVR (220V/240V)
39	CMS11	OILSEAL	110	900-19700	SCREW LID NVR
40	MS25	GEARBOX ASSEMBLY	111	900-18100	CABLE EXTENSION (240V)
40A	900-24700	GEARBOX ASSEMBLY (HONDA GXH50)	112	900-32300	KIT GEARBOX SUPPORT PLATE
41	MS08	GEARCASE (→ 89)	113	900-99931	PLATE GEARBOX SUPPORT
42	MS21	WORMSHAFT	114	9-10005	BOLT (M10 X 45)
42A	900-24701	WORMSHAFT (HONDA GXH50)	115	92-00002	ENGINE OIL - 450ML BOTTLE
43	PS013	BEARING (6004)	116	900-36200	CONVERSION KIT (HONDA GXH50)
44	CMS39	GEARBOX PULLEY	117	900-31600	GEARBOX PULLEY KIT (HONDA GXH50)
45	8-12003	NUT (M12 L/H)	118	20-0031	ENGINE (HONDA GXH50)
46	MS01	V-BELT (A23.5)	119	800-21320	DECAL HOT PARTS
46A	900-15400	V-BELT (A23) (60HZ)	120	900-99935	BELT GUARD (HONDA GXH50)
47	MS22	CIRCLIP	121	7-6034	BOLT (M6 X 16)
48	CMS41	OILSEAL (→ 89)	122	900-99934	PLATE BELT GUARD (HONDA GXH50)
49	CMS19	ENGINE - BRIGGS & STRATTON	123	900-35300	ENGINE DECK (HONDA GXH50)
50	👁️ 116	ENGINE - HONDA G100	124	900-36400	ENGINE PULLEY KIT (HONDA GXH50)
51	MS16	ENGINE - ROBIN			
52	MS18	ENGINE PULLEY 3/4"			
53	900-21300	PULLEY (HONDA G100)			
53A	MS32	ENGINE PULLEY KIT (ROBIN)			
54	9-8003	BOLT (M8 X 35)			
55	8-8001	NUT (M8)			
55A	4-8002	WASHER (8MM)			
57	CMS13	PADDLE KIT - 2 PADDLES & BRACKET			
60	900-20400	MOTOR KIT (240V NVR)			

Belle Group reserves the right to alter details and specification without notice

⁽¹⁾ Item Number / numéro sur le schéma / número de la ilustración / número da ilustração / afbeeldingsnummer / tegningsnummeret / Teil-Nummer / numero dell'illustrazione
⁽²⁾ Part Number / Numéro de référence de la pièce / número de pieza / número da parte / stuknummer / Styknummer / Nummer auf der Abbildung / numero di parte
⁽³⁾ Description / Désignation / Descripción / Descrição / Omschrijving / Beskrivelse / Bezeichnung / Descrizione