



# RT50

ITEM NUMBER <sup>(1)</sup>	PART NUMBER <sup>(2)</sup>	DESCRIPTION <sup>(3)</sup>	QTY <sup>(4)</sup>
001A	29.1.248	Engine, Robin EH09D-42140 (→ 0012115)	1
001B	29.1.249	Engine, Robin EH09D Dual Cleaner	1
001C	👁️ 001E	Engine, Honda GX100KRE4 (→ 0405148, → 0607183)	1
001D	👁️ 001E	Engine, Honda GX100KRS (→ 0311307, → 0407193)	1
001E	20-0068	Engine, Honda GX100KRM (→ 141000)	1
002	158.0.058	Flange (Robin Only)	1
002	158.0.101	Flange (Honda Only)	1
003	06.4.002	Dowel Pin (Robin Only)	2
003	158.0.102	Dowel Pin (Robin Only)	2
004	01.0.004	Nut, M8 (Robin Only)	4
005	4/8003	Spring Washer, M8 (Robin Only)	4
006	05.0.006	Washer, M8 (Robin Only)	4
007	9-8042	Flange Bolt, M8x40 (Honda Only)	4
010	00.0.020	Bolt, M8 x 35, 8T (Robin Only)	4
011	4/8003	Spring Washer, M8 (Robin Only)	4
012	05.0.006	Washer, M8 (Robin Only)	4
013	9-8043	Stud Bolt, M8x25 (Honda Only)	4
015	01.0.105	Nut, M10 (Honda Only)	4
016	15.0.082	Wire Clamp (RCT1006)	1
022	158.0.056	Engine Base (Robin Only)	1
023	158.0.057	Recoil Guard (Robin Only)	1
023	158.0.103	Recoil Guard (Honda Only)	1
024	00.0.019	Bolt, M8x30, 8T	4
025	4/8003	Spring Washer, M8	6
028	00.0.020	Bolt, M8x35, 8T (Robin Only)	2
100	158.0.053	Fuel Hose (L=100) (Robin Only)	1
100	158.0.009	Fuel Hose (L160) (Honda Only)	1
101	158.0.053	Fuel Hose (L=100) (Robin Only)	1
101	158.0.003	Fuel Hose (L80) (Honda Only)	1
102	21.0.327	Line Filter	1
103	15.0.084	Hose Clamp (Robin Only)	4
103	15.0.085	Hose Clamp (Honda Only)	4
104	158.0.013	Fuel Strainer	1
105	158.0.014	Grommet	1
106	15.0.289	O Ring, S16	1
107	158.0.063	Fuel Tank (→ ????)	1
108	158.0.011	Fuel Filter	1
109	158.0.012	Fuel Tank Cap (→ ????)	1
110	00.0.175	Bolt, M8x25, 4T	2
111	05.0.057	Washer, 25x8.5x1.6	2
112	4/8003	Spring Washer, M8	2
113	01.0.104	Nylock Nut, M8	2
114	158.0.005	Centrifugal Clutch	1
115	158.0.006	Side Plate (A2, t=1.6mm)	1
116	158.0.104	Side Plate (A1, t=1.0mm)	1
117	158.0.007	Side Plate (B, t=1.0mm)	1
118	06.3.111	Woodruff Key	1
119	01.0.623	Nut, M12 Fine-Threaded	1
120	05.1.007	Spring Washer, M12	1
121	158.0.021	Clutch Housing	1
122	00.0.174	Bolt, M8x20, 8T	1
123	4/8003	Spring Washer, M8	1
124	05.0.058	Washer, 25x8.5x1.6	1
125	158.0.004	Operation Handle	1

<sup>(1)</sup> Item Number / numero sur le schéma / número de la ilustración / número da ilustração / afbeeldingsnummer / tegningsnummeret / Teil-Nummer / numero dell'illustrazione

<sup>(2)</sup> Part Number / Numéro de référence de la pièce / número de pieza / número da parte / stuknummer / Styknummer / Nummer auf der Abbildung / numero di parte

<sup>(3)</sup> Description / Désignation / Descripción / Descrição / Omschrijving / Beskrivelse / Bezeichnung / Descrizione

<sup>(4)</sup> Quantity / Quantiti / Cantidad / Cantidade / Hoeveelheid / Mengen / Mængde / Quantitù

# RT50

ITEM NUMBER(1)	PART NUMBER(2)	DESCRIPTION(3)	QTY(4)
127	158.0.070	Rubber Isolator for Handle	2
128	00.0.174	Bolt, M8x20, 8T	2
129	4/8003	Spring Washer, M8	2
130	00.0.173	Bolt, M8x20, 4T	6
131	4/8003	Spring Washer, M8	6
132	05.0.006	Washer, M8	6
133	19.0.409	Throttle Lever	1
134	19.0.404	Throttle Wire	1
135	15.0.086	Hose Band	1
136	158.0.124	Fuel Tank (→ ????)	1
137	158.0.125	Fuel Cap (→ ????)	1
138	158.0.129	Strap (→ ????)	1
139	158.0.126	In-Tank Fuel Filter (→ ????)	1
140	158.0.127	Tank Seal (→ ????)	1
141	158.0.128	Tank Adapter (→ ????)	1
142	158/01000	Fuel Tank Rework Kit (→ ????)	1
200	158.0.064	Crankcase	1
201	158.0.065	Crankcase Cover	1
202	158.0.066	Packing	1
203	00.0.171	Bolt, M6x25, 4T	8
204	05.1.004	Spring Washer, M6	8
205	05.0.002	Washer, M6	8
206	158.0.067	Shaft Cover	1
207	15.0.285	O Ring, P34	1
208	00.0.170	Bolt, M6x16, 4T	2
209	05.1.004	Spring Washer, M6	2
210	00.0.172	Bolt, M8x16, 8T	1
211	4/8003	Spring Washer, M8	1
212	05.0.058	Washer, 25x8.5xt3.2	1
214	158.0.068	Crankshaft	1
215	12.1.149	Bearing, 6306	1
216	12.1.150	Bearing, 6204LLU	1
217	05.8.059	Snap Ring R47	1
218	158.0.034	Pinion Shaft	1
219	12.1.150	Bearing, 6204LLU	1
220	12.1.152	Bearing, 6907LLU	1
221	15.0.291	Oil Seal, TC40588	1
222	06.3.110	Key, 5x5x20	1
223	158.0.035	Connecting Rod	1
224	12.1.147	Bearing, 6204	1
225	05.8.059	Snap Ring, R47	1
226	05.8.057	Snap Ring, S20	1
301	158.0.036	Piston Pin	1
302	05.8.056	Snap Ring, S16	1
303	158.0.069	Guiding Cylinder	1
304	15.0.287	O Ring, G90	1
305	00.0.178	Bolt, M10x30, 4T	4
306	05.1.006	Spring Washer, M10	4
307	158.0.038	Bellows (Ø155mm)	1
308	158.0.040	Bellows Stop Band	2
309	158.0.039	Spacer	2
310	158.0.041	Protector	1
311	14.0.106	Oil Plug	1
312	158.0.042	Packing	1

(1) Item Number / numero sur le schéma / número de la ilustración / número da ilustração / afbeeldingsnummer / tegningsnummeret / Teil-Nummer / numero dell'illustrazione

(2) Part Number / Numéro de référence de la pièce / número de pieza / número da parte / stuknummer / Styknummer / Nummer auf der Abbildung / numero di parte

(3) Description / Désignation / Descripción / Descrição / Omschrijving / Beskrivelse / Bezeichnung / Descrizione

(4) Quantity / Quantiti / Cantidad / Cantidade / Hoeveelheid / Mengen / Mængde / Quantitù

# RT50

ITEM NUMBER(1)	PART NUMBER(2)	DESCRIPTION(3)	QTY(4)
400	158.0.043	Spring Cylinder	1
401	15.0.286	O Ring, G80	2
402	158.0.099	Ram Rod Complete (Incl. Items 403, 404 & 405)	1
403	158.0.044	Ram Rod (→ 0012135, → 0210064)	1
404	158.0.045	Piston Guide (→ 0012135, → 0210064)	1
405	01.0.624	Nut, M18xP1.5 (→ 0012135, → 0210064)	1
406	158.0.046	Guide Joint	1
407	06.1.020	Spring Pin, 6 x 45	1
408	158.0.050	Spring Complete, Upper	1
409	158.0.051	Spring Complete, Lower	1
410	158.0.047	Foot Stand (→ 0012115, → 0103284) (Robin Only)	1
410	158.0.105	Foot Stand (→ 0302121) (Robin Only)	1
410	158.0.105	Foot Stand (Honda Only)	1
411	158.0.108	Drain Plug 1/8" (→ 0012115, → 0103284) (Robin Only)	1
411	158.0.106	Drain Plug, M12 (→ 0302121) (Robin Only)	1
411	158.0.106	Drain Plug, M12 (Honda Only)	1
412	158.0.109	Packing (→ 0302121)	1
413	07.0.055	Sckt Hd Bolt, M10x40 (→ 0012115, → 0103284) (Robin Only)	4
413	07.0.069	Sckt Hd Bolt, M10x45 (→ 0302121) (Robin Only)	4
413	07.0.069	Sckt Hd Bolt, M10x45 (Honda Only)	4
414	07.0.003	Sckt Hd Bolt, M10x25 (→ 0012115, → 0103284) (Robin Only)	4
414	07.0.008	Sckt Hd Bolt, M10x30 (→ 0302121) (Robin Only)	4
414	07.0.008	Sckt Hd Bolt, M10x30 (Honda Only)	4
416	05.3.072	Coned Disc Washer, M10	8
417	158.0.052	Ramming Shoe Complete	1
418	00.5.061	Square Flat Head Bolt, M12 x 69	2
419	00.5.061	Square Flat Head Bolt, M12 x 69	2
419	00.5.062	Sq Flat Hd Bolt, M12 x 75 (For m/c's with Item 603)	2
420	05.1.020	Spring Washer, M12	4
421	01.0.106	Nyloc Nut, M12	4
422	158.0.115	Washer M12	2
500	158.0.059	Cleaner Stay (Robin DC Only)	1
501	00.0.177	Bolt, M8x16, 4T (Robin DC Only)	4
502	4/8003	Spring Washer, M8 (Robin DC Only)	4
503	158.0.061	Primary Air Cleaner Complete (Robin DC Only)	1
504	158.0.054	Element A (Robin DC Only)	1
505	158.0.055	Element B (Robin DC Only)	1
506	158.0.060	Intake Pipe (Robin DC Only)	1
507	21.0.328	Cable Tie (Robin DC Only)	1
600	158.0.008	Roller Complete	2
601	9/6021	Allen Bolt M6 x 20	4
602	8/6013	Nyloc Nut, M6	4
603	158.0.001	Grab Handle (A) (→ 151022, → 151024) (Robin Only)	1
603	158.0.001	Grab Handle (A) (→ 0407188, → 141105) (Honda Only)	1
603	158.0.118	Grab Handle (D) (→ 141106)	1
Not Shown			
-	158.0.132	Clutch Springs	2

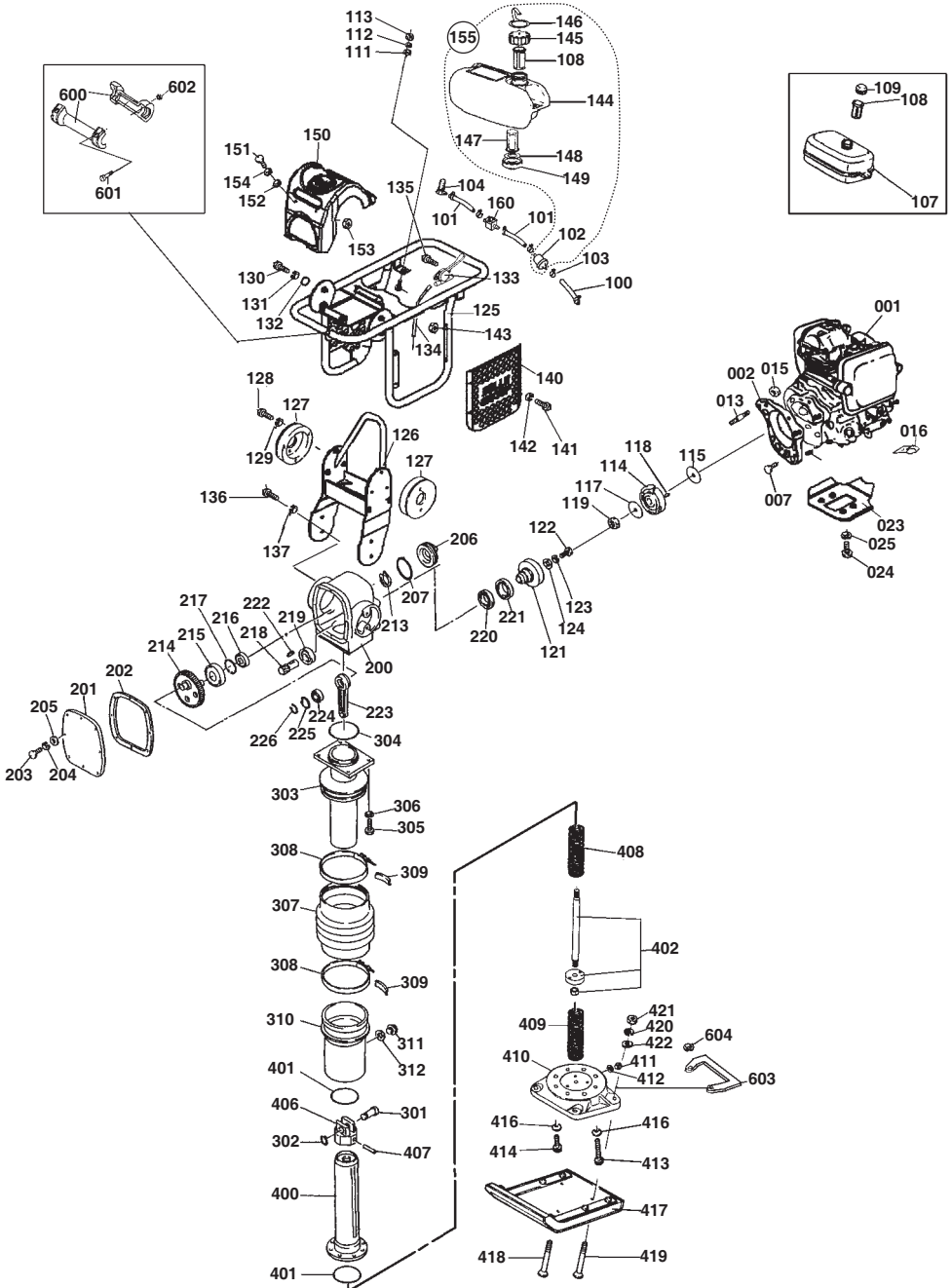
(1) Item Number / numero sur le schéma / número de la ilustración / número da ilustração / afbeeldingsnummer / tegningsnummeret / Teil-Nummer / numero dell'illustrazione

(2) Part Number / Numero de référence de la pièce / número de pieza / número da parte / stuknummer / Styknummer / Nummer auf der Abbildung / numero di parte

(3) Description / Désignation / Descripción / Descrição / Omschrijving / Beskrivelse / Bezeichnung / Descrizione

(4) Quantity / Quantiti / Cantidad / Quantidade / Hoeveelheid / Mengen / Mængde / Quantitù

# RT65



# RT65

ITEM NUMBER <sup>(1)</sup>	PART NUMBER <sup>(2)</sup>	DESCRIPTION <sup>(3)</sup>	QTY <sup>(4)</sup>
001	20/0068	Engine, Honda GX100KRM	1
002	158.0.101	Flange	1
003	158.0.102	Dowel Pin	4
007	9/8042	Flange Bolt, M8x40	4
013	00.5.063	Stud Bolt, M10x80	4
015	01.0.105	Nut, M10	4
016	15.0.082	Wire Clamp (RCT1006)	1
023	158/00300	Recoil Guard	1
024	00.0.019	Bolt, M8x30, 8T	4
025	4/8003	Spring Washer, M8	4
100	158.0.009	Fuel Hose (L160)	1
101	158.0.003	Fuel Hose (L80)	2
102	21.0.327	Line Filter	1
103	15.0.085	Hose Clamp	6
104	158/99911	Banjo Fitting	1
106	15.0.289	O Ring, S16	1
107	158.0.063	Fuel Tank (→ July '07)	1
108	158.0.011	Fuel Filter	1
109	158.0.012	Fuel Tank Cap (→ July '07)	1
110	00.0.175	Bolt, M8x25, 4T	2
111	05.0.057	Washer, 25x8.5xt1.6	2
112	4/8003	Spring Washer, M8	2
113	01.0.104	Nylock Nut, M8	2
114	158.0.005	Centrifugal Clutch	1
115	158.0.006	Side Plate (A2, t=1.6mm)	1
117	158.0.007	Side Plate (B, t=1.0mm)	1
118	06.3.111	Woodruff Key	1
119	01.0.623	Nut, M12 Fine-Threaded	1
121	158.0.021	Clutch Housing	1
122	00.0.174	Bolt, M8x20, 8T	1
123	4/8003	Spring Washer, M8	1
124	05.0.058	Washer, 25x8.5xt3.2	1
125	158/00400	Operation Handle	1
126	158/00500	Handle Mount	1
127	158.0.070	Rubber Isolator for Handle	2
128	00.0.174	Bolt, M8x20, 8T	4
129	4/8003	Spring Washer, M8	4
130	00.0.173	Bolt, M8x20, 4T	6
131	4/8003	Spring Washer, M8	6
132	05.0.006	Washer, M8	6
133	19.0.962	Throttle Lever	1
134	158/00801	Throttle Wire	1
135	7/5007	Screw Cap M5x16 CSK BLK	4
136	7/10016	Screw Cap M10x30 BZP	4
137	4/1003	Washer - M10 Spring BZP	4
140	158/99917	Side Cover	1
141	02.0.012	Bolt	4
142	4/6001	Washer	4
143	8/6007	Nut	4
144	158.0.124	Fuel Tank (→ July '07)	1
145	158.0.125	Fuel Cap (→ July '07)	1
146	158.0.129	Strap (→ July '07)	1
147	158.0.126	In-Tank Fuel Filter (→ July '07)	1
148	158.0.127	Tank Seal (→ July '07)	1
149	158.0.128	Tank Adapter (→ July '07)	1
150	158/99901	Top Cover (Orange)	1
150	158/99914	Top Cover (Red)	1
150	158/99913	Top Cover (Yellow)	1
150	158/99922	Top Cover (White)	1
150	158/99923	Top Cover (Green)	1
151	7/6039	Bolt	4
152	4/6016	Rubber washer	4

<sup>(1)</sup> Item Number / numiro sur le schima / número de la ilustración / número da ilustração / afbeeldingsnummer / tegningsnummeret / Teil-Nummer / numero dell'illustrazione

<sup>(2)</sup> Part Number / Numiro de rñferece de la piñce / número de pieza / número da parte / stuknummer / Styknummer / Nummer auf der Abbildung / numero di parte

<sup>(3)</sup> Description / Disignation / Descripción / Descrição / Omschrijving / Beskrivelse / Bezeichnung / Descrizione

<sup>(4)</sup> Quantity / Quantiti / Cantidad / Cantidade / Hoeveelheid / Mengen / Mængde / Quantitù

# RT65

ITEM NUMBER <sup>(1)</sup>	PART NUMBER <sup>(2)</sup>	DESCRIPTION <sup>(3)</sup>	QTY <sup>(4)</sup>
153	8/6022	Well Nut	4
154	4/6007	M6 Form C washer	2
155	158/01000	Fuel Tank Rework Kit (→ July '07)	1
160	158/99915	Fuel Shut-off Valve	1
200	158.0.029	Crankcase	1
201	158.0.030	Crank Case Cover	1
202	158.0.031	Packing	1
203	9/6017	Bolt, M6x20, 4T	8
204	05.1.004	Spring Washer, M6	8
205	05.0.002	Washer, M6	8
206	158.0.032	Shaft Cover	1
207	15.0.290	O Ring, P39	1
213	05.8.058	Snap Ring, S25	1
214	158.0.033	Crank Shaft	1
215	12.1.148	Bearing, 6207	1
216	12.1.151	Bearing, 6305LLU	1
217	05.8.060	Snap Ring, R62	1
218	158.0.034	Pinion Shaft	1
219	12.1.150	Bearing, 6204LLU	1
220	12.1.152	Bearing, 6907LLU	1
221	15.0.291	Oil Seal, TC40588	1
222	06.3.110	Key, 5x5x20	1
223	158.0.035	Connecting Rod	1
224	12.1.147	Bearing, 6204	1
225	05.8.059	Snap Ring, R47	1
226	05.8.057	Snap Ring, S20	1
301	158.0.036	Piston Pin	1
302	05.8.056	Snap Ring, S16	1
303	158.0.037	Guiding Cylinder	1
304	15.0.288	O Ring, G105	1
305	00.0.178	Bolt, M10x30, 4T	4
306	05.1.006	Spring Washer, M10	4
307	158.0.038	Bellows (Ø155mm)	1
307	158.0.121	Bellows - Red (Ø155mm)	1
308	158.0.040	Bellows Stop Band	2
309	158.0.039	Spacer	2
310	158.0.041	Protector	1
311	14.0.106	Oil Plug	1
312	158.0.042	Packing	1
400	158.0.043	Spring Cylinder	1
401	15.0.286	O Ring, G80	2
402	158.0.099	Ram Rod Complete	1
406	158.0.046	Guide Joint	1
407	06.1.020	Spring Pin, 6 x 45	1
408	19.0.092	Spring Complete, Upper	1
409	19.0.093	Spring Complete, Lower	1
410	158.0.105	Foot Stand Compl. (Aluminum)	1
411	158.0.106	Drain Plug, M12	1
412	158.0.109	Packing	1
413	07.0.055	Socket Head Bolt, M10x40, 10.9T	4
414	07.0.003	Socket Head Bolt, M10x25, 10.9T	4
416	05.3.072	Coned Disc Washer, M10	8
417	158.0.131	Ramming Shoe Complete (170mm)	1
417	158.0.052	Ramming Shoe Complete (250mm)	1
417	158.0.048	Ramming Shoe Complete (280mm)	1
418	00.5.061	Square Flat Head Bolt, M12 x 69	2
419	00.5.062	Square Flat Head Bolt, M12 x 75	2
420	05.1.020	Spring Washer, M12	4
421	01.0.106	Nylock Nut, M12	4
422	4/12004	Washer, M12	2

<sup>(1)</sup> Item Number / numiro sur le schima / número de la ilustracion / número da ilustranyo / afbeeldingsnummer / tegningsnummeret / Teil-Nummer / numero dell'illustrazione

<sup>(2)</sup> Part Number / Numiro de rñfrence de la piñce / número de pieza / número da parte / stuknummer / Styknummer / Nummer auf der Abbildung / numero di parte

<sup>(3)</sup> Description / Disignation / Descripcion / Descrinyo / Omschrijving / Beskrivelse / Bezeichnung / Descrizione

<sup>(4)</sup> Quantity / Quantiti / Cantidad / Cantidade / Hoeveelheid / Mengen / Mængde / Quantitù

# RT65

ITEM NUMBER(1)	PART NUMBER(2)	DESCRIPTION(3)	QTY(4)
600	158.0.008	Transport Roller Compl.	1
601	7/6003	Allen Bolt, M6x20	4
602	8/6017	Nylock Nut, M6	4
603	158/99919	Grab Handle	1
604	158/00706	Washer	2
Not Shown			
-	158.0.132	Clutch Springs	2

(1) **Item Number** / numiro sur le schima / número de la ilustración / número da ilustração / afbeeldingsnummer / tegningsnummeret / Teil-Nummer / numero dell'illustrazione

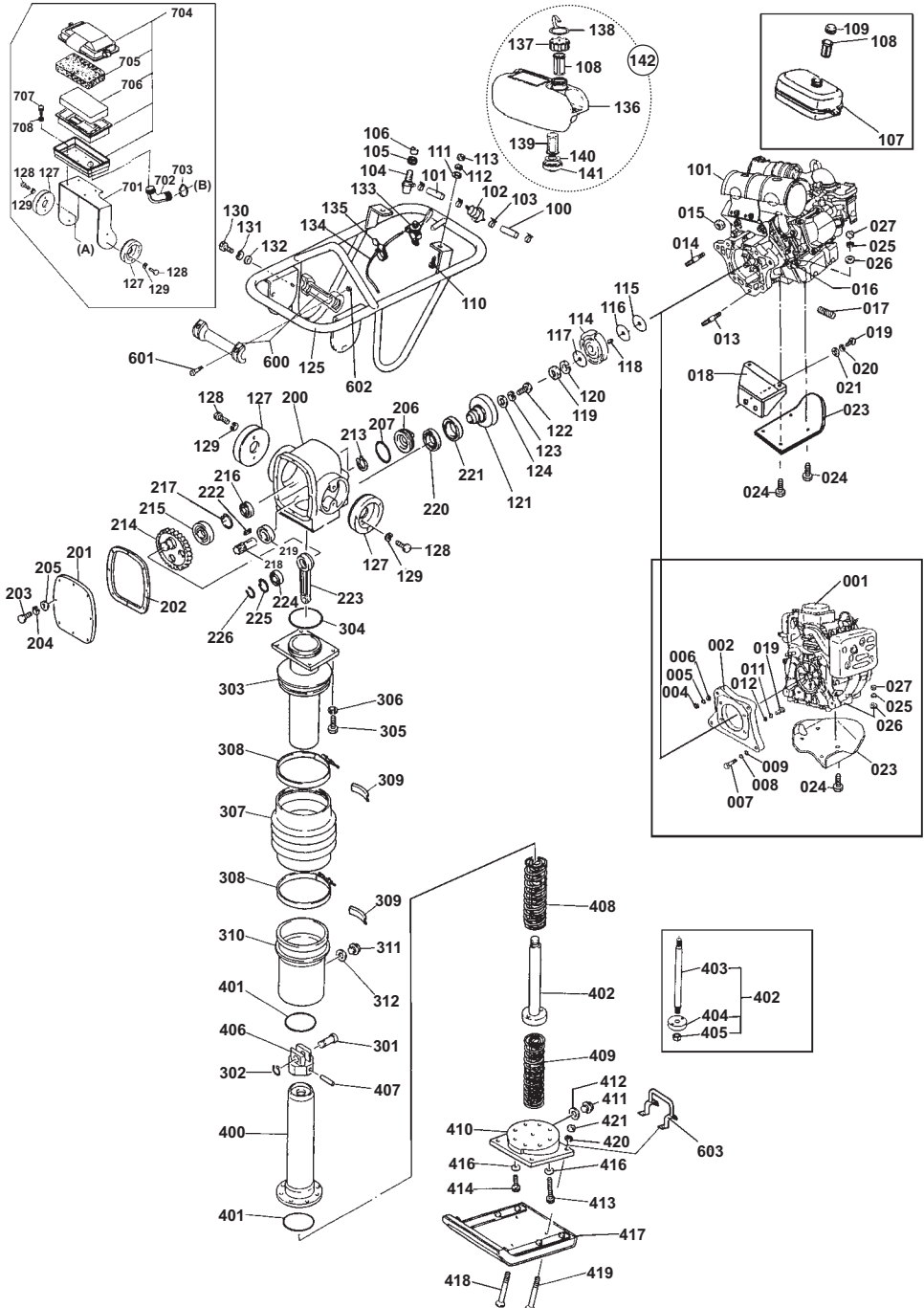
(2) **Part Number** / Numiro de rñference de la piñce / número de pieza / número da parte / stuknummer / Styknummer / Nummer auf der Abbildung / numero di parte

(3) **Description** / Disignation / Descripción / Descrição / Omschrijving / Beskrivelse / Bezeichnung / Descrizione

(4) **Quantity** / Quantit / Cantidad / Cantidade / Hoeveelheid / Mengen / Mængde / Quantitü



# RT66



# RT66

ITEM NUMBER <sup>(1)</sup>	PART NUMBER <sup>(2)</sup>	DESCRIPTION <sup>(3)</sup>	QTY <sup>(4)</sup>
001A	⊕ 001D	Engine, Honda GX120K1AR (→ 0012135, → 0212162)	1
001B	⊕ 001D	Engine, Honda GX120K1KRF4 (→ 0012224, → 0407178)	1
001C	⊕ 001D	Engine, Honda GX120K1KRS4 (→ 0212099, → 0407179)	1
001D	20/0045	Engine, Honda GX120K1KRS4 (→ 161000) (Honda Only)	1
001E	20/0069	Engine, Robin EH12-2D (→ 0207194) (Robin Only)	1
002	158.0.111	Flange (Robin Only)	1
004	8/10001	Nut M10 (Robin Only)	2
005	05.1.006	Spring Washer, M10 (Robin Only)	4
006	4/1001	Washer, M8 (Robin Only)	4
007	9/10026	Bolt, M10x55, 4T (Robin Only)	2
008	05.1.006	Spring Washer, M10 (Robin Only)	4
009	4/1001	Washer, M10 (Robin Only)	4
010	9/10024	Bolt, M10 x 35, 4T (Robin Only)	4
011	05.1.006	Spring Washer, M10 (Robin Only)	4
012	4/1001	Washer, M10 (Robin Only)	4
013	00.5.063	Stud Bolt, M10x80 (Honda Only)	1
014	00.5.064	Stud Bolt, M10x53 (Honda Only)	3
015	01.0.105	Nut, M10 (Honda Only)	4
016	15.0.083	Wire Clamp (COT8) (Honda Only)	1
017	158.0.107	Protective Tube, 7x250 (Honda Only)	1
018	158.0.049	Engine Stay (Honda Only)	1
019	00.0.176	Bolt, M10x30, 8T (Honda Only)	2
020	05.1.006	Spring Washer, M10 (Honda Only)	2
021	05.0.061	Washer 25 x 10.5 x 3.2T (Honda Only)	2
023	158.0.015	Recoil Guard (→ 0012135, → 0403360) (Honda Only)	1
023	158.0.119	Recoil Guard (→ 0404030, → 162668 ) (Honda Only)	1
023	158.0.110	Recoil Guard (→ 162669) (Honda Only)	1
023	158.0.110	Recoil Guard (Robin Only)	1
024	00.0.023	Bolt, M8x50, 8T (Honda Only)	4
024	9/8044	Bolt, M8x40, 8T(Robin Only)	4
025	4/8003	Spring Washer, M8(Robin Only)	4
026	05.0.006	Washer, M8	4
027	01.0.104	Nylock Nut, M8 (Honda Only)	4
027	01.0.004	Nut, M8(Robin Only)	4
100	158.0.053	Fuel Hose (L=100)(Robin Only)	1
100	158.0.009	Fuel Hose (L160) (Honda Only)	1
101	158.0.053	Fuel Hose (L=100)(Robin Only)	1
101	158.0.003	Fuel Hose (L80) (Honda Only)	1
102	21.0.327	Line Filter (Honda Only)	1
103	15.0.084	Hose Clamp(Robin Only)	4
103	15.0.085	Hose Clamp (Honda Only)	4
104	158.0.013	Fuel Strainer	1
105	158.0.014	Grommet	1
106	15.0.289	O Ring, S16	1
107	158.0.010	Fuel Tank (→ 190000)	1
108	158.0.011	Fuel Filter	1
109	158.0.012	Fuel Tank Cap (→ 190000)	1
110	00.0.175	Bolt, M8x25, 4T	2
111	05.0.057	Washer, 25x8.5x1.6	2
112	4/8003	Spring Washer, M8	2
113	01.0.104	Nylock Nut, M8	2
114	158.0.005	Centrifugal Clutch	1
115	158.0.006	Side Plate (A2, t=1.6mm)	1
116	158.0.104	Side Plate (A1, t=1.0mm)(Robin Only)	1
117	158.0.007	Side Plate (B, t=1.0mm)	1
118	06.3.111	Woodruff Key	1
119	01.0.623	Nut, M12 Fine-Threaded	1
120	05.1.007	Spring Washer, M12	1
121	158.0.021	Clutch Housing	1
122	00.0.174	Bolt, M8x20, 8T	1
123	4/8003	Spring Washer, M8	1
124	05.0.058	Washer, 25x8.5x3.2	1

<sup>(1)</sup> Item Number / numiro sur le schima / número de la ilustracion / número da ilustranyo / afbeeldingsnummer / tegningsnummeret / Teil-Nummer / numero dell'illustrazione

<sup>(2)</sup> Part Number / Numiro de rñfrence de la piñe / número de pieza / número da parte / stuknummer / Styknummer / Nummer auf der Abbildung / numero di parte

<sup>(3)</sup> Description / Disignation / Descripcion / Descrinyo / Omschryving / Beskrivelse / Bezeichnung / Descrizione

<sup>(4)</sup> Quantity / Quantiti / Cantidad / Cantidade / Hoeveelheid / Mengen / Mængde / Quantitù

# RT66

ITEM NUMBER <sup>(1)</sup>	PART NUMBER <sup>(2)</sup>	DESCRIPTION <sup>(3)</sup>	QTY <sup>(4)</sup>
125	158.0.024	Operation Handle (→ 190000)	1
125	158.0.133	Operation Handle (→ 190001)	1
127	158.0.025	Rubber Isolator for Handle	2
128	00.0.174	Bolt, M8x20, 8T	2
129	4/8003	Spring Washer, M8	2
130	00.0.173	Bolt, M8x20, 4T	6
131	4/8003	Spring Washer, M8	6
132	05.0.006	Washer, M8	6
133	19.0.402	Throttle Lever	1
134	19.0.403	Throttle Wire	1
135	15.0.081	Hose Band	1
136	158.0.124	Fuel Tank (→ 190001)	1
137	158.0.125	Fuel Cap (→ 190001)	1
138	158.0.129	Strap (→ 190001)	1
139	158.0.126	In-Tank Fuel Filter (→ 190001)	1
140	158.0.127	Tank Seal (→ 190001)	1
141	158.0.128	Tank Adapter (→ 190001)	1
142	158/01000	Fuel Tank Rework Kit (→ 190001)	1
200	158.0.029	Crankcase	1
201	158.0.030	Crank Case Cover	1
202	158.0.031	Packing	1
203	9/6019	Bolt, M6x20, 4T	8
204	05.1.004	Spring Washer, M6	8
205	05.0.002	Washer, M6	8
206	158.0.032	Shaft Cover	1
207	15.0.290	O Ring, P39	1
213	05.8.058	Snap Ring, S25	1
214	158.0.033	Crank Shaft	1
215	12.1.148	Bearing, 6207	1
216	12.1.151	Bearing, 6305LLU	1
217	05.8.060	Snap Ring, R62	1
218	158.0.034	Pinion Shaft	1
219	12.1.150	Bearing, 6204LLU	1
220	12.1.152	Bearing, 6907LLU	1
221	15.0.291	Oil Seal, TC40588	1
222	06.3.110	Key, 5x5x20	1
223	158.0.035	Connecting Rod	1
224	12.1.147	Bearing, 6204	1
225	05.8.059	Snap Ring, R47	1
226	05.8.057	Snap Ring, S20	1
301	158.0.036	Piston Pin	1
302	05.8.056	Snap Ring, S16	1
303	158.0.037	Guiding Cylinder (→ 0207194, → 0207213) (Robin Only)	1
303	158.0.037	Guiding Cylinder (→ 0012135, → 0210064) (Honda Only)	1
303	158.0.089	Guiding Cylinder (→ 0212099)	1
304	15.0.288	O Ring, G105	1
305	00.0.178	Bolt, M10x30, 4T	4
306	05.1.006	Spring Washer, M10	4
307	158.0.071	Bellows (Ø180mm)	1
308	158.0.028	Bellows Stop Band	2
309	158.0.039	Spacer	2
310	158.0.041	Protector (→ 0207194, → 0207213) (Robin Only)	1
310	158.0.041	Protector (→ 0012135, → 0210064) (Honda Only)	1
310	158.0.090	Protector (→ 0212099)	1
311	14.0.106	Oil Plug	1
312	158.0.042	Packing	1

<sup>(1)</sup> Item Number / numero sur le schéma / número de la ilustración / número da ilustração / afbeeldingsnummer / tegningsnummeret / Teil-Nummer / numero dell'illustrazione

<sup>(2)</sup> Part Number / Numéro de référence de la pièce / número de pieza / número da parte / stuknummer / Styknummer / Nummer auf der Abbildung / numero di parte

<sup>(3)</sup> Description / Désignation / Descripción / Descrição / Omschrijving / Beskrivelse / Bezeichnung / Descrizione

<sup>(4)</sup> Quantity / Quantiti / Cantidad / Cantidade / Hoeveelheid / Mengen / Mængde / Quantitá

# RT66

ITEM NUMBER(1)	PART NUMBER(2)	DESCRIPTION(3)	QTY(4)
400	158.0.043	Spring Cylinder (→ 0207194, → 0207213) (Robin Only)	1
400	158.0.043	Spring Cylinder (→ 0012135, → 0210064) (Honda Only)	1
400	158.0.095	Spring Cylinder (→ 0212099)	1
401	15.0.286	O Ring, G80 (→ 0207194, → 0207213) (Robin Only)	2
401	15.0.286	O Ring, G80 (→ 0012135, → 0210064) (Honda Only)	2
401	15.0.287	O Ring, G90 (→ 0212099)	2
402	158.0.099	Ram Rod Complete (→ 0207194, → 0207213) (Robin Only)	1
402	158.0.099	Ram Rod Complete (→ 0012135, → 0210064) (Honda Only)	1
402	158.0.094	Ram Rod Complete (→ 0212099)	1
403	↻ 402	Ram Rod (→ 0012135, → 0210064)	1
404	↻ 402	Piston Guide (→ 0012135, → 0210064)	1
405	↻ 402	Nut, M18 x P1.5 (→ 0012135, → 0210064)	1
406	158.0.046	Guide Joint (→ 0207194, → 0207213) (Robin Only)	1
406	158.0.046	Guide Joint (→ 0012135, → 0210064) (Honda Only)	1
406	158.0.091	Guide Joint (→ 0212099)	1
407	06.1.020	Spring Pin, 6 x 45	1
408	19.0.092	Spring Complete, Upper (→ 0207194, → 0207213) (Robin Only)	1
408	19.0.092	Spring Complete, Upper (→ 0012135, → 0210064) (Honda Only)	1
408	19.0.096	Spring Complete, Upper (→ 0212099)	1
409	19.0.093	Spring Complete, Lower (→ 0207194, → 0207213) (Robin Only)	1
409	19.0.093	Spring Complete, Lower (→ 0012135, → 0210064) (Honda Only)	1
409	19.0.097	Spring Complete, Lower (→ 0212099)	1
410	158.0.047	Foot Stand (→ 0207194, → 0207213) (Robin Only)	1
410	158.0.105	Foot Stand (→ 0012135, → 0210064) (Honda Only)	1
410	158.0.092	Foot Stand (→ 0212099)	1
411	158.0.108	Drain Plug, 1/8"	1
413	07.0.055	Sckt Hd Bolt, M10x40, 10.9T	4
414	07.0.003	Sckt Hd Bolt, M10x25, 10.9T	4
416	05.3.072	Coned Disc Washer, M10	8
417	158.0.048	Ramming Shoe Complete (→ 0207194, → 0207213) (Robin Only)	1
417	158.0.048	Ramming Shoe Complete (→ 0012135, → 0210064) (Honda Only)	1
417	158.0.026	Ramming Shoe Complete (→ 0212099)	1
418	00.5.061	Square Flat Head Bolt, M12 x 69	2
419	00.5.061	Sq Flat Head Bolt, M12 x 69 (→ 0207194, → 171014) (Robin Only)	2
419	00.5.061	Sq Flat Head Bolt, M12 x 69 (Honda Only)	2
419	00.5.062	Sq Flat Head Bolt, M12 x 75 (→ 171014) (Robin Only)	2
420	05.1.020	Spring Washer, M12	4
421	01.0.106	Nylock Nut, M12	4
600	158.0.008	Roller Complete	2
601	9/6021	Allen Bolt M6 x 20	4
602	8/6013	Nyloc Nut, M6	4
603	158.0.001	Grab Handle (A) (→ 171015, → 171118) (Robin Only)	1
603	158.0.112	Grab Handle (B) (→ 161215, → 162674) (Honda Only)	1
603	158.0.118	Grab Handle (D) (→ 171119)	1
701	158.0.114	Cleaner Stay (Robin Only)	1
702	158.0.060	Intake Pipe (Robin Only)	1
703	21.0.328	Tie Wrap (Robin Only)	1
704	158.0.061	Pre-Cleaner Assy (Incl. Item 705 & 706) (Robin Only)	1
705	158.0.054	Element A (Robin Only)	1
706	158.0.055	Element B (Robin Only)	1
707	158.0.115	Bolt, M8x16, 4T (Robin Only)	4
708	4/8003	Spring Washer, M8 (Robin Only)	4
Not Shown			
-	158.0.132	Clutch Springs	2

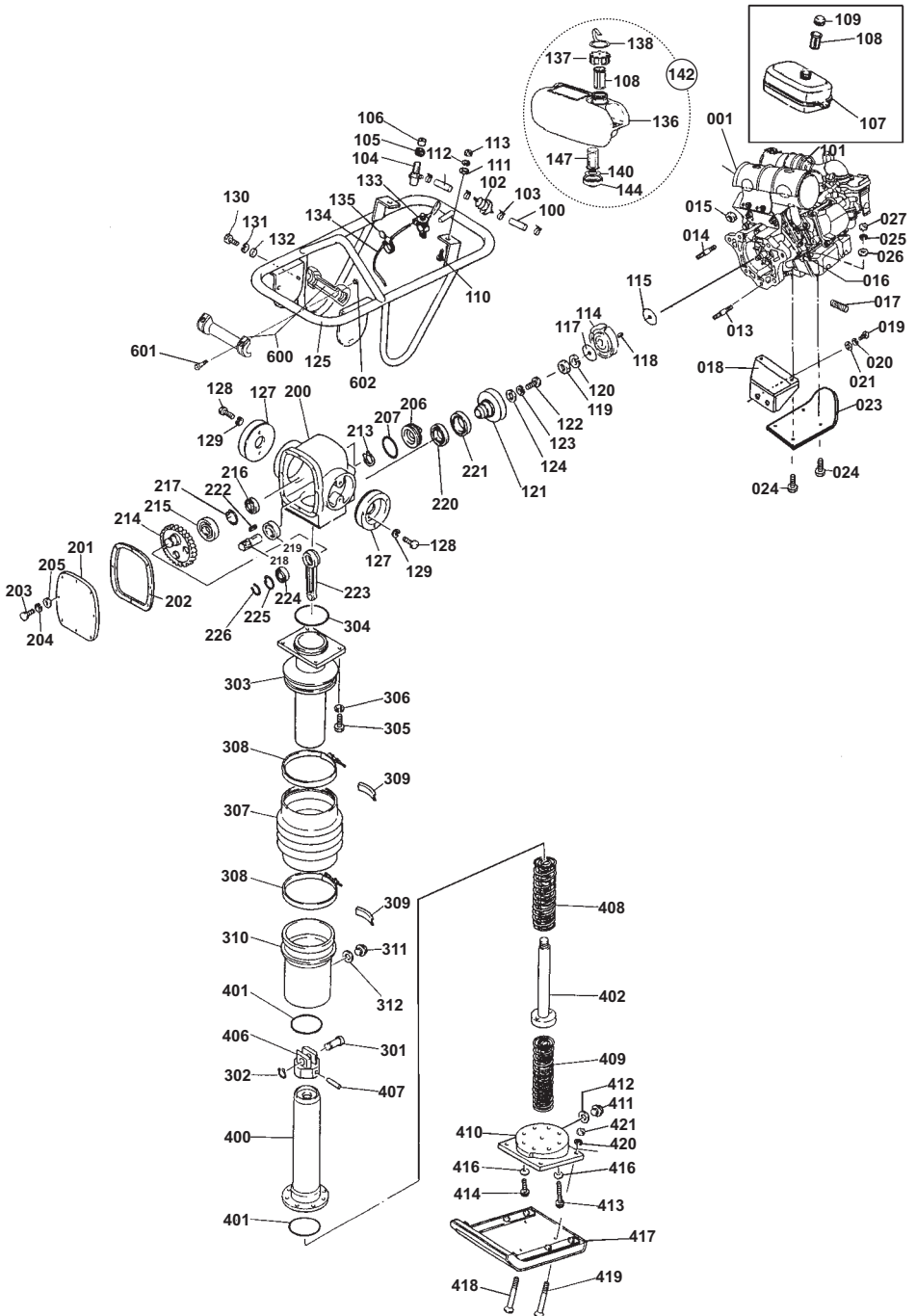
(1) Item Number / numiro sur le schima / número de la ilustracion / número da ilustranyo / afbeeldingsnummer / tegningsnummeret / Teil-Nummer / numero dell'illustrazione

(2) Part Number / Numiro de nrérence de la piéce / número de pieza / número da parte / stuknummer / Styknummer / Nummer auf der Abbildung / número di parte




(3) Description / Disignation / Descripcion / Descrinyo / Omschrijving / Beskrivelse / Bezeichnung / Descrizione

(4) Quantity / Quantiti / Cantidad / Cantidade / Hoeveelheid / Mengen / Mængde / Quantità

# RT74



# RT74

ITEM NUMBER <sup>(1)</sup>	PART NUMBER <sup>(2)</sup>	DESCRIPTION <sup>(3)</sup>	QTY <sup>(4)</sup>
001A	 001D	Engine, Honda GX120K1AR (→ 0012225, → 0102212)	1
001B	 001D	Engine, Honda GX120K1KRF4 (→ 0012244, → 0406124)	1
001C	 001D	Engine, Honda GX120K1KRS4 (→ 0304134, → 0406126)	1
001D	20.0045	Engine, Honda GX120K1KRS4 (→ 181000)	1
013	00.5.063	Stud Bolt, M10x80	1
014	00.5.064	Stud Bolt, M10x53	3
015	01.0.105	Nut, M10	4
016	15.0.083	Wire Clamp (COT8)	1
017	158.0.107	Protective Tube, 7x250	1
018	158.0.049	Engine Stay	1
019	00.0.176	Bolt, M10x30, 8T	2
020	05.1.006	Spring Washer, M10	2
021	05.0.061	Washer 25 x 10.5 x 3.2t	2
023	158.0.015	Recoil Guard (→ 0012225, → 181143)	1
023	158.0.119	Recoil Guard (→ 181144)	1
024	00.0.023	Bolt, M8x50, 8T	4
026	05.0.006	Washer, M8	4
027	01.0.104	Nylock Nut, M8	4
100	158.0.009	Fuel Hose (L160)	1
101	158.0.003	Fuel Hose (L80)	1
102	21.0.327	Line Filter	1
103	15.0.085	Hose Clamp	4
104	158.0.013	Fuel Strainer	1
105	158.0.014	Grommet	1
106	15.0.289	O Ring, S16	1
107	158.0.010	Fuel Tank (→ 190000)	1
108	158.0.011	Fuel Filter	1
109	158.0.012	Fuel Tank Cap (→ 190000)	1
110	00.0.175	Bolt, M8x25, 4T	2
111	05.0.057	Washer, 25x8.5xt1.6	2
112	4/8003	Spring Washer, M8	2
113	01.0.104	Nylock Nut, M8	2
114	158.0.005	Centrifugal Clutch	1
115	158.0.006	Side Plate (A2, t=1.6mm)	1
117	158.0.007	Side Plate (B, t=1.0mm)	1
118	06.3.111	Woodruff Key	1
119	01.0.623	Nut, M12 Fine-Threaded	1
120	05.1.007	Spring Washer, M12	1
121	158.0.021	Clutch Housing	1
122	00.0.174	Bolt, M8x20, 8T	1
123	4/8003	Spring Washer, M8	1
124	05.0.058	Washer, 25x8.5xt3.2	1
125	158.0.024	Operation Handle (→ 190000)	1
125	158.0.133	Operation Handle (→ 190001)	1
127	158.0.025	Rubber Isolator for Handle	2
128	00.0.174	Bolt, M8x20, 8T	2
129	4/8003	Spring Washer, M8	2
130	00.0.173	Bolt, M8x20, 4T	6
131	4/8003	Spring Washer, M8	6
132	05.0.006	Washer, M8	6
133	19.0.402	Throttle Lever	1
134	19.0.403	Throttle Wire	1
135	15.0.081	Hose Band	1
136	158.0.124	Fuel Tank (→ 190001)	1
137	158.0.125	Fuel Cap (→ 190001)	1
138	158.0.129	Strap (→ 190001)	1
139	158.0.126	In-Tank Fuel Filter (→ 190001)	1
140	158.0.127	Tank Seal (→ 190001)	1
141	158.0.128	Tank Adapter (→ 190001)	1
142	158/01000	Fuel Tank Rework Kit (→ 190001)	1
200	158.0.029	Crankcase	1
201	158.0.030	Crank Case Cover	1

<sup>(1)</sup> Item Number / numero sur le schéma / número de la ilustración / número da ilustração / afbeeldingsnummer / tegningsnummeret / Teil-Nummer / numero dell'illustrazione

<sup>(2)</sup> Part Number / Numéro de référence de la pièce / número de pieza / número da parte / stuknummer / Styknummer / Nummer auf der Abbildung / numero di parte

<sup>(3)</sup> Description / Désignation / Descripción / Descrição / Omschrijving / Beskrivelse / Bezeichnung / Descrizione

<sup>(4)</sup> Quantity / Quantiti / Cantidad / Cantidade / Hoeveelheid / Mengen / Mængde / Quantitá

# RT74

ITEM NUMBER <sup>(1)</sup>	PART NUMBER <sup>(2)</sup>	DESCRIPTION <sup>(3)</sup>	QTY <sup>(4)</sup>
202	158.0.031	Packing	1
203	9/6019	Bolt, M6x20, 4T	8
204	05.1.004	Spring Washer, M6	8
205	05.0.002	Washer, M6	8
206	158.0.032	Shaft Cover	1
207	15.0.290	O Ring, P39	1
213	05.8.058	Snap Ring, S25	1
214	158.0.033	Crank Shaft	1
215	12.1.148	Bearing, 6207	1
216	12.1.151	Bearing, 6305LLU	1
217	05.8.060	Snap Ring, R62	1
218	158.0.034	Pinion Shaft	1
219	12.1.150	Bearing, 6204LLU	1
220	12.1.152	Bearing, 6907LLU	1
221	15.0.291	Oil Seal, TC40588	1
222	06.3.110	Key, 5x5x20	1
223	158.0.035	Connecting Rod	1
224	12.1.147	Bearing, 6204	1
225	05.8.059	Snap Ring, R47	1
226	05.8.057	Snap Ring, S20	1
301	158.0.036	Piston Pin	1
302	05.8.056	Snap Ring, S16	1
303	158.0.016	Guiding Cylinder	1
304	15.0.288	O Ring, G105	1
305	00.0.178	Bolt, M10x30, 4T	4
306	05.1.006	Spring Washer, M10	4
307	158.0.071	Bellows (Ø180mm)	1
308	158.0.028	Bellows Stop Band	2
309	158.0.039	Spacer	2
310	158.0.090	Protector	1
311	14.0.106	Oil Plug	1
312	158.0.042	Packing	1
400	158.0.095	Spring Cylinder	1
401	15.0.287	O Ring, G90	2
402	158.0.094	Ram Rod Complete	1
406	158.0.020	Guide Joint	1
407	06.1.020	Spring Pin, 6 x 45	1
408	158.0.022	Spring Complete, Upper	1
409	158.0.023	Spring Complete, Lower	1
410	158.0.027	Foot Stand	1
411	158.0.108	Drain Plug, 1/8"	1
413	07.0.055	Socket Head Bolt, M10x40, 10.9T	4
415	07.0.003	Socket Head Bolt, M10x25, 10.9T	4
416	05.3.072	Coned Disc Washer, M10	8
417	158.0.903	Ramming Shoe Complete	1
418	00.5.061	Square Flat Head Bolt, M12 x 69	2
419	00.5.061	Square Flat Head Bolt, M12 x 69 (→ 0012225, → 181020)	2
419	00.5.062	Square Flat Head Bolt, M12 x 75 (→ 181021)	2
420	05.1.020	Spring Washer, M12	4
421	01.0.106	Nylock Nut, M12	4
600	158.0.008	Roller Complete	2
601	9/6021	Allen Bolt M6 x 20	4
602	8/6013	Nyloc Nut, M6	4
603	158.0.112	Grab Handle (B) (→ 181021, → 181143)	1
603	158.0.118	Grab Handle (D) (→ 181144)	1
Not Shown			
-	158.0.132	Clutch Springs	2

<sup>(1)</sup> Item Number / numiro sur le schima / número de la ilustracion / número da ilustranjo / afbeeldingsnummer / tegningsnummeret / Teil-Nummer / numero dell'illustrazione

<sup>(2)</sup> Part Number / Numiro de rñference de la piñe / número de pieza / número da parte / stuknummer / Styknummer / Nummer auf der Abbildung / numero di parte

<sup>(3)</sup> Description / Disignation / Descripcion / Descripjo / Omschrijving / Beskrivelse / Bezeichnung / Descrizione

<sup>(4)</sup> Quantity / Quantiti / Cantidad / Cantidade / Hoeveelheid / Mengen / Mængde / Quantitù